



Mone Partners Engineering

**Industrial Electrical &
Automation Systems Catalog**



Mone Partners Engineering



01

About us.

As Mone Partners, we offer reliable and innovative solutions for your projects with our identity as a construction and infrastructure projects solution partner. While successfully bringing your projects to life, our expert team prioritizes quality at every stage, adding value to you through sustainable and effective collaborations. Thanks to our international experience, we execute projects in various regions around the world and provide services that meet global standards.

Additionally, by offering comprehensive consultancy services for railway and highway projects, we provide expert support at every stage of your projects. With our experience and industry knowledge, we assist you in completing your projects with the highest efficiency and success.

Why choose us?



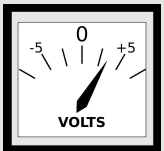
Expert Team and Engineering Solutions

A skilled team of engineers and technicians providing tailored engineering and consulting services for precise project execution.



Comprehensive Project Services

Comprehensive project services from planning to execution, adhering to industry standards and regulations.



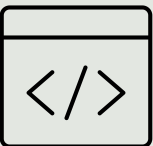
Safety and Measurement Services

Comprehensive testing and measurements conducted to ensure the safety and reliability of electrical installations.



Maintenance and Repair

Maintenance and repair services ensuring electrical systems and equipment operate at peak efficiency, minimizing downtime.



Software Solutions

Advanced software solutions offered to integrate and optimize electrical and automation systems for improved performance.



Strong Customer Service

Exceptional, responsive customer support that ensures smooth project execution, with ongoing assistance before, during, and after product installation.



02

Our products.

Explore our extensive
range of products.

MONE

Power Distribution Panel

Power distribution panels are designed to ensure the safe and efficient flow of energy in industrial facilities. These panels, equipped with high-current-capacity copper busbars, advanced insulation systems, and automatic control units, are manufactured in accordance with international electrical standards. By providing balanced distribution of electrical loads, they enhance system stability, improve power quality, and incorporate short-circuit protection systems. These panels optimize energy management, ensuring reliable energy distribution for businesses.



Usage Areas

- Factories
- Hospitals
- Shopping centers
- Power plants

Compensation Panel

Compensation panels enhance energy efficiency by maintaining reactive power balance and preventing unwanted energy losses in electrical grids, thus reducing operational costs. These panels optimize grid voltage, reduce the load on motors and other electrical equipment, and enhance the power factor ($\cos \varphi$), improving energy quality. Supported by harmonic filters and SVC (Static VAR Compensator) reactors, these systems dynamically manage reactive power demand through microprocessor-based control, providing maximum energy savings.



Usage Areas

- Industrial plants
- Large-scale buildings
- Energy-intensive industries

Harmonic Filter

Harmonic filters reduce harmonic distortions in electrical grids, improving system efficiency and safety. High harmonic distortion loads can cause voltage fluctuations and equipment failures within the grid. These filters are equipped with active and passive harmonic reactors to minimize voltage fluctuations and magnetic field effects, ensuring stable energy flow. They provide safe, efficient, and application-specific solutions for high-voltage energy systems and substation centers.



Usage Areas

- Precision manufacturing facilities
- Data centers
- Power distribution networks

Machine Control Panel

Machine control panels ensure the safe and automated management of production processes, enabling precise control of machinery and preventing production errors. Integrated with automation systems, these panels provide remote monitoring and control, optimizing production processes. By supporting industrial communication protocols (Profibus, Modbus, Ethernet/IP), they facilitate data flow between machines and simplify the integration of production processes.

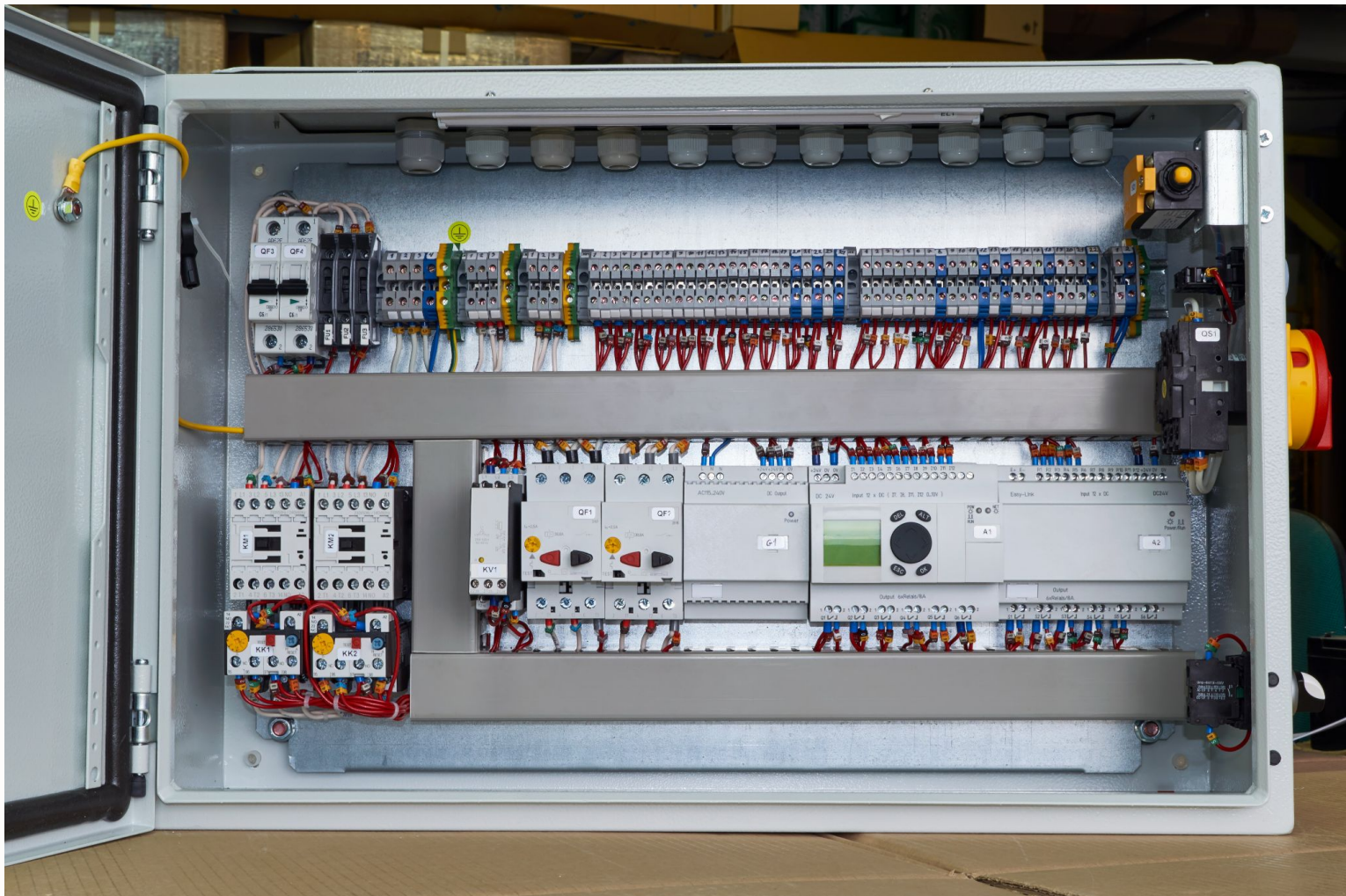


Usage Areas

- Wire drawing machines, wire washing machines, resistance welding machines
- Exhaust manufacturing machines, winch control units, feeding systems
- Oil cooling systems, double-glazed gas filling machines, glass profile manufacturing machines
- Marina waste collection systems, double-handed press systems, water jet control systems
- Pump control systems, crane load control systems

Process Control Panel

Process control panels automate production processes, ensuring safer and more efficient operation. Widely used in the chemical, food, and pharmaceutical sectors, these panels monitor and analyze process data in real-time, enabling automatic system control. Integrated with PLC (Programmable Logic Controller) and SCADA (Supervisory Control and Data Acquisition) systems, these solutions minimize process errors through sensor-supported monitoring, thereby enhancing production efficiency.



Usage Areas

- Chemical industry
- Food industry
- Pharmaceutical industry
- Mining industry

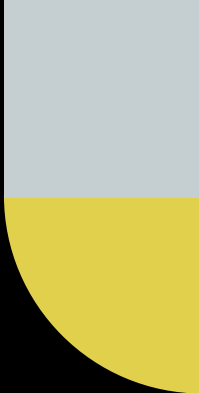
Medium Voltage (MV) Substation

Medium voltage substations are critical systems that enable voltage conversion within power grids, facilitating safe energy transfer. Used in large-scale enterprises and energy production facilities, these substations are equipped with power transformers, circuit breakers, and protection relays to minimize energy losses and enhance system safety. MV substations are also supported by remote monitoring and management systems, providing early warning systems for grid faults.



Usage Areas

- Power generation plants
- Industrial zones
- Large commercial buildings
- Infrastructure projects



Mone Partners Engineering





Thanks.

Do you have any questions?

info@monepartners.com

monepartners.com

